

SUBDIVISION
PLAN OF LAND
FOR
JOHN H. SCHIAVI
IN

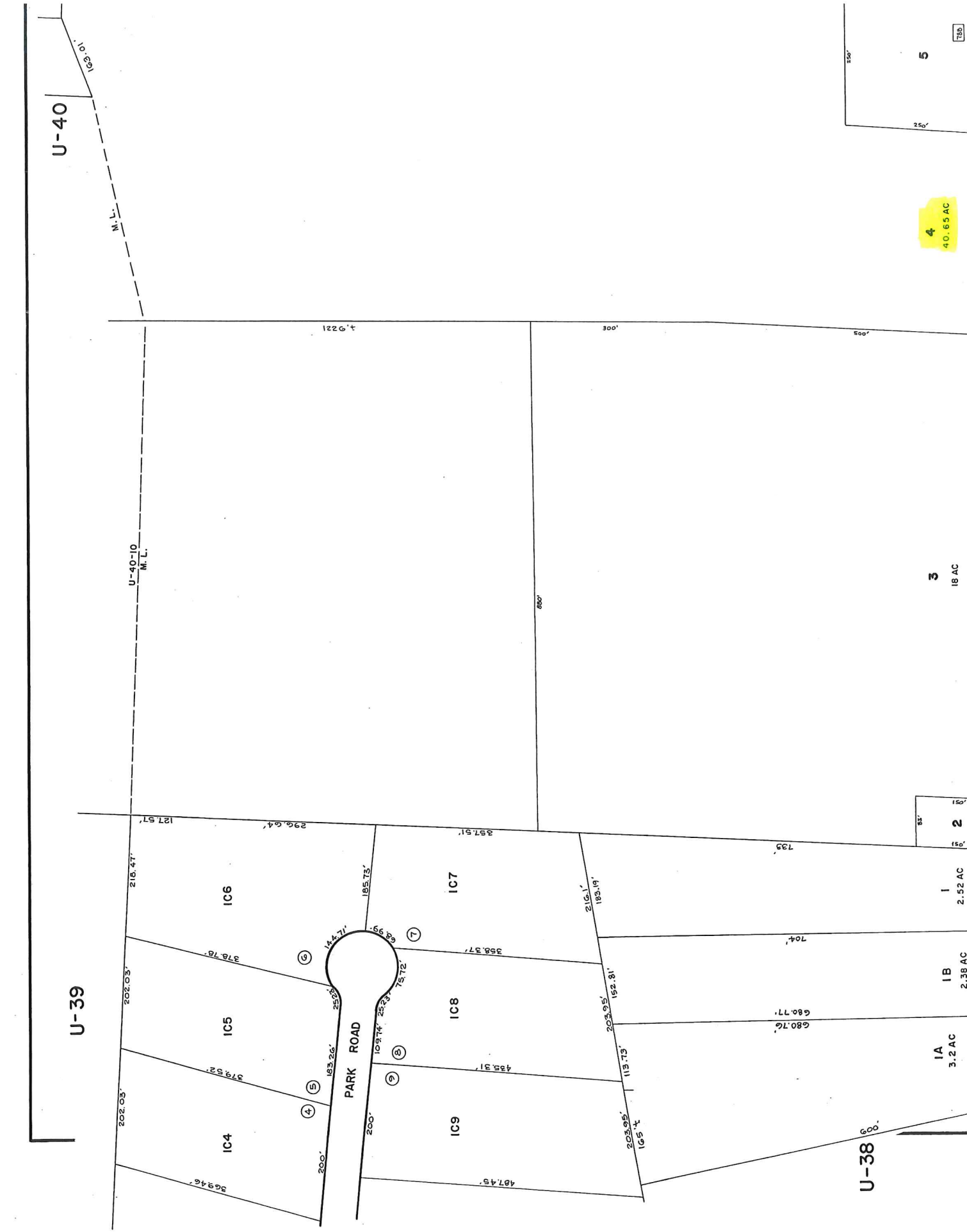
"SCHIAVI INDUSTRIAL PARK"
LOCATED NEAR INTERSECTION ROLLER RINK RD.
AND ROUTE 26 OXFORD MAINE

ROLLER RINK
IRON PIN FOUND
IRON PIPE FOUND

N/T
HAYDEN B BELLWOOD
531
195

APPROVED BY THE OXFORD, MAINE
PLANNING BOARD
9/13 19 84
CHAIRMAN
[Signature]

NOTE: RECORD DISTANCE
FROM ROAD INTERSECTION
TO SE CORNER AUSTIN IS
FIELD MEASURED DISTANCE
TO AXLE FOUND IS 1518' ±.



U-40

M.L.

U-40-10
M.L.

U-39

PARK ROAD

U-38

IC6

IC5

IC4

IC7

IC8

IC9

1

IB

IA

2

3

4

5

18 AC

2.52 AC

2.38 AC

3.2 AC

600'

40.65 AC

186

127.57'

202.03'

202.03'

202.03'

216.47'

379.52'

379.52'

379.52'

296.64'

183.26'

183.26'

200'

185.73'

14.47'

109.74'

200'

358.37'

75.72'

25.33'

200'

216.1'

435.31'

203.95'

203.95'

183.19'

152.81'

113.73'

165.4'

704'

680.76'

680.77'

600'

139'

152.81'

113.73'

165.4'

297.51'

358.37'

435.31'

407.45'

216.1'

152.81'

113.73'

165.4'

704'

680.76'

680.77'

600'

139'

152.81'

113.73'

165.4'

297.51'

358.37'

435.31'

407.45'

216.1'

152.81'

113.73'

165.4'

704'

680.76'

680.77'

600'

139'

152.81'

113.73'

165.4'

297.51'

358.37'

435.31'

407.45'

216.1'

152.81'

113.73'

165.4'

704'

680.76'

680.77'

600'

139'

152.81'

113.73'

165.4'

297.51'

358.37'

435.31'

407.45'

216.1'

152.81'

113.73'

165.4'

704'

680.76'

680.77'

600'

139'

152.81'

113.73'

165.4'

297.51'

358.37'

435.31'

407.45'

216.1'

152.81'

113.73'

165.4'

704'

680.76'

680.77'

600'

139'

152.81'

113.73'

165.4'

297.51'

358.37'

435.31'

407.45'

216.1'

152.81'

113.73'

165.4'

704'

680.76'

680.77'

600'

139'

152.81'

113.73'

165.4'

297.51'

358.37'

435.31'

407.45'

216.1'

152.81'

113.73'

165.4'

40.65 AC

18 AC

2.52 AC

2.38 AC

3.2 AC

600'

40.65 AC

186